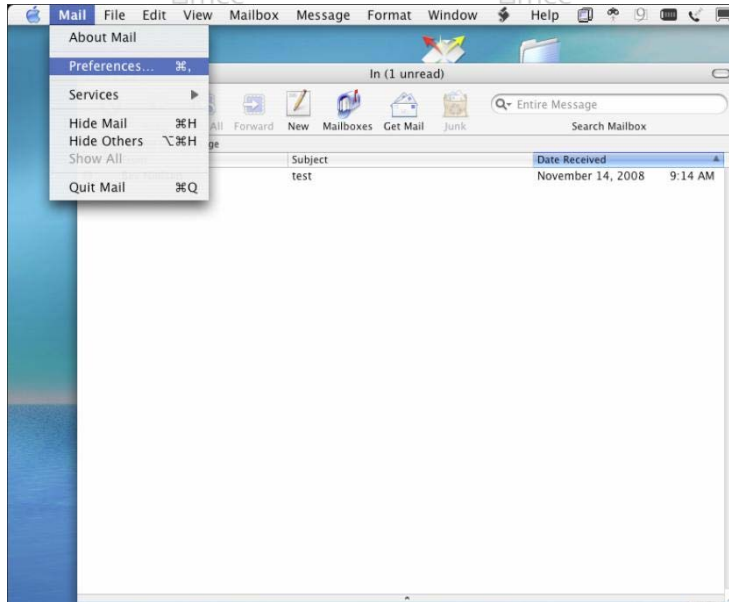
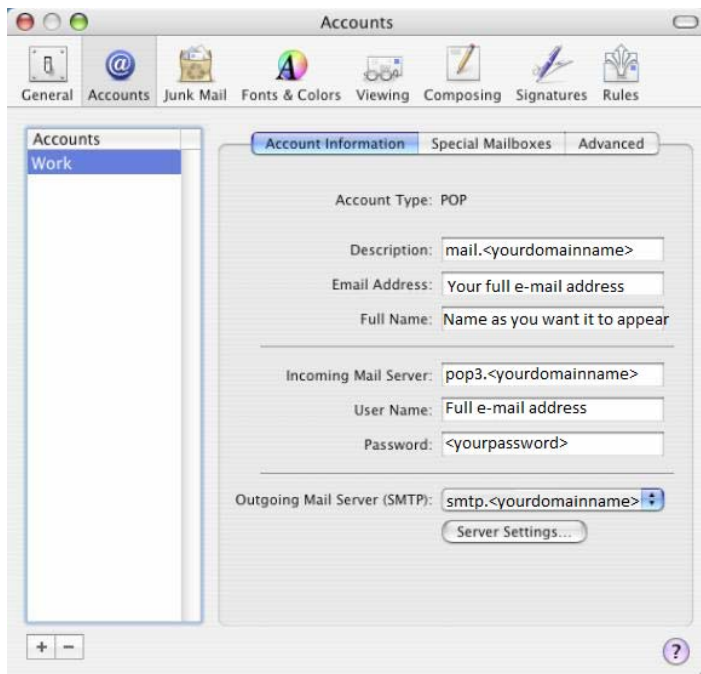


Mac Mail JKNET Port change

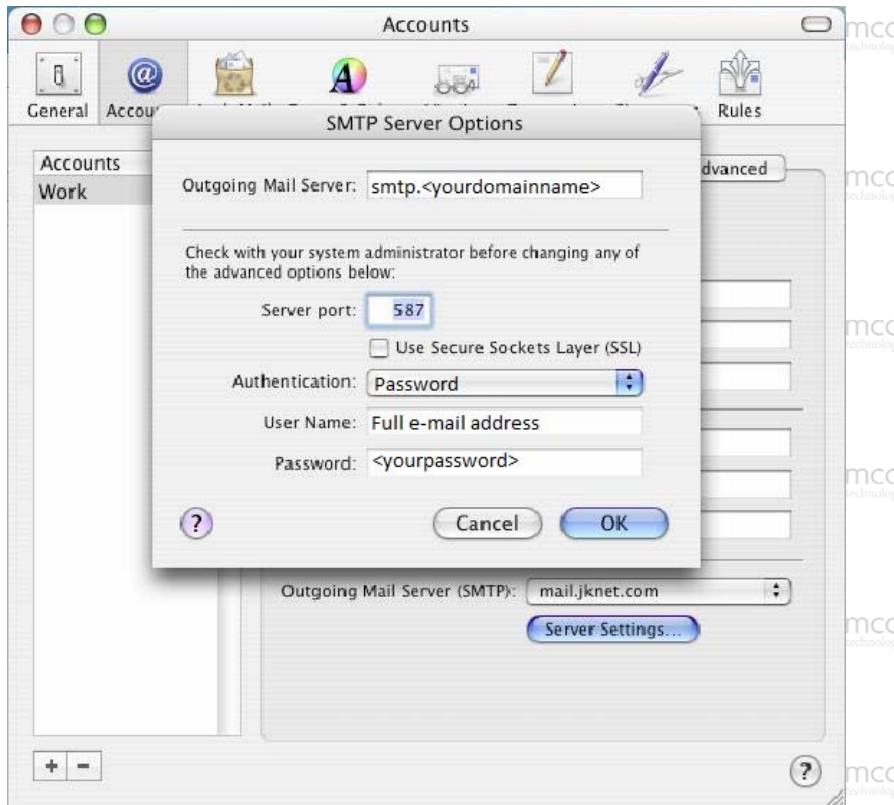
1. Open Mac Mail -> click "Mail" in title bar -> Click "Preferences..."



2. Click "Accounts" tab at top -> Click on your account -> Click on "Account Information" Verify that Incoming Mail Server = pop3.<domainname>



3. Click "Server Settings..." at bottom



4. Change "Server port:" to 587
 - a. Verify Outgoing Mail Server = smtp.<domainname>
5. Click "OK" -> Click red circle to close window.