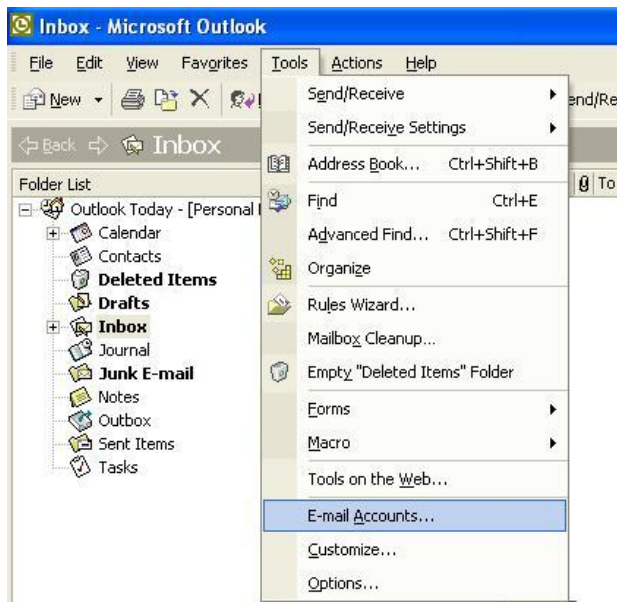
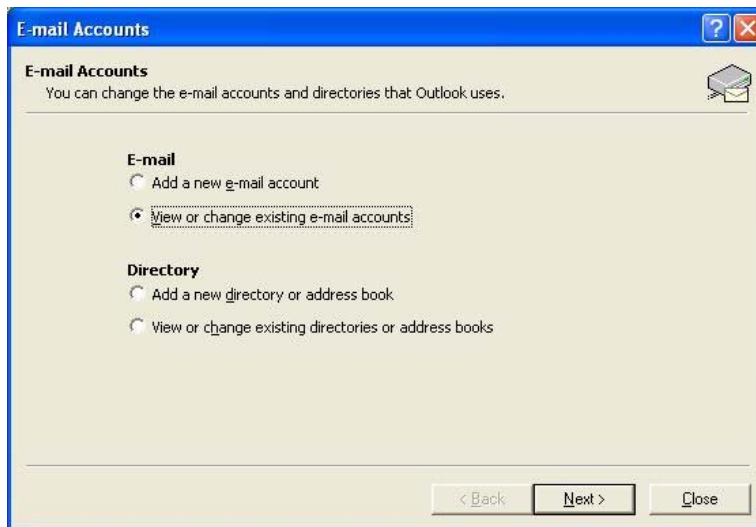


# Office XP (2002) Outlook port change

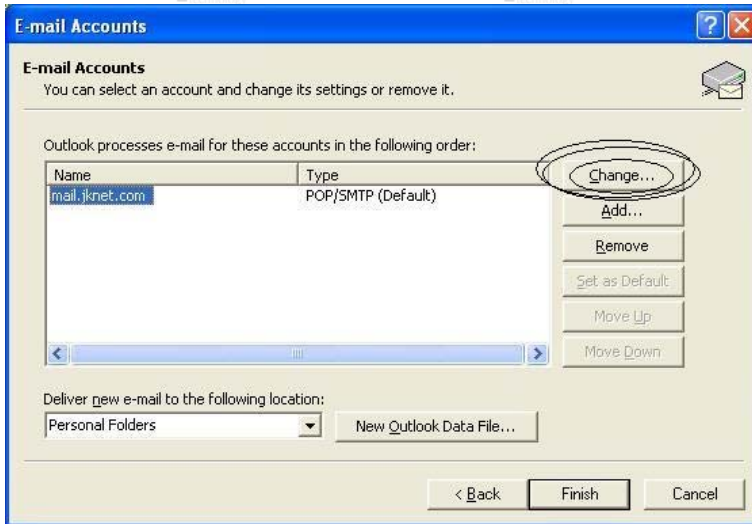
1. Click Tools -> E-mail Accounts...



2. Click "View or change existing e-mail accounts" -> Click "Next >"

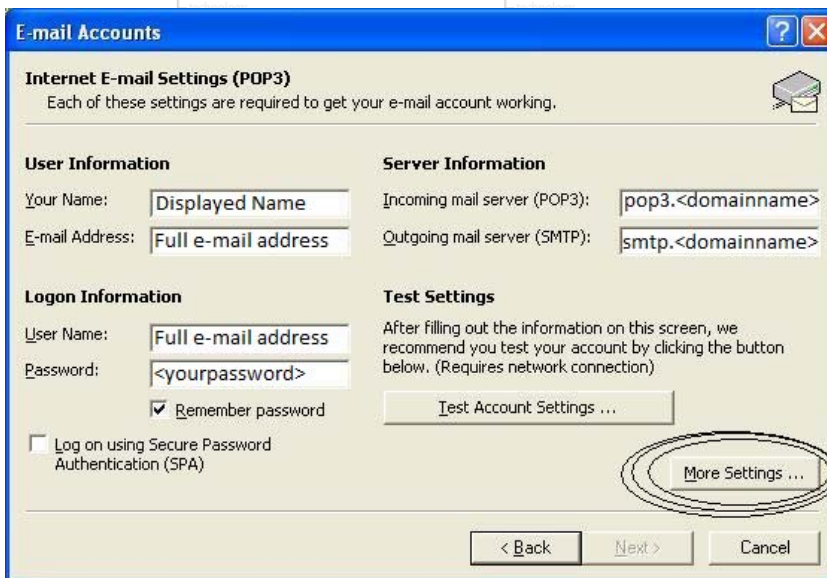


3. Select the e-mail account and click "Change..."

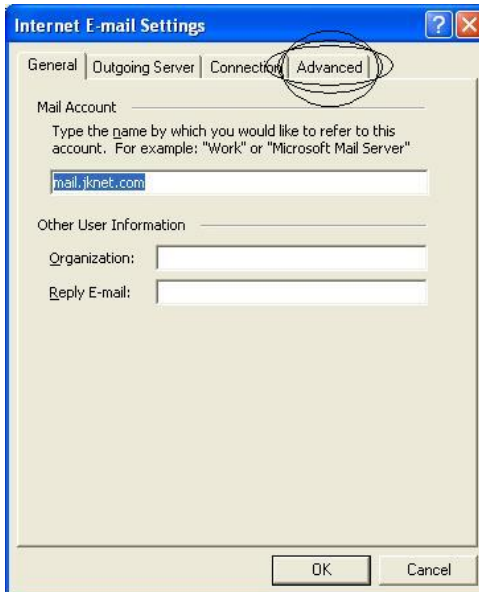


4. Verify the following settings:
  - a. Incoming mail server (POP3) = pop3.<domainname>
  - b. Outgoing mail server (SMTP) = smtp.<domainname>

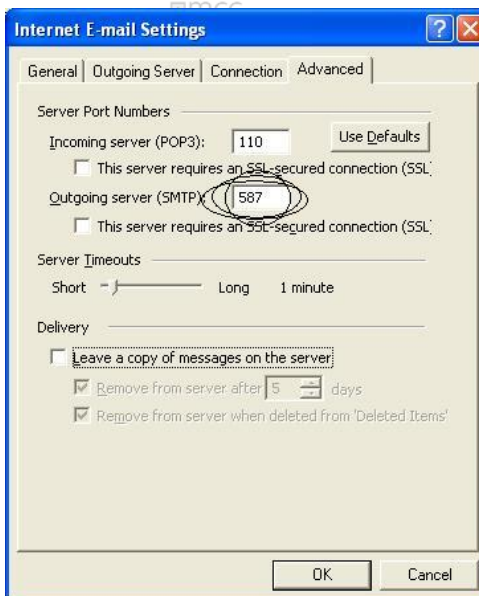
5. Click "More Settings..."



6. Click "Advanced" tab at top



7. Change "Outgoing server (SMTP):" from 25 to 587



8. Click "OK"
9. Click "Next >"
10. Click "Finish"